

HEALTH TRENDS IN MARIJUANA

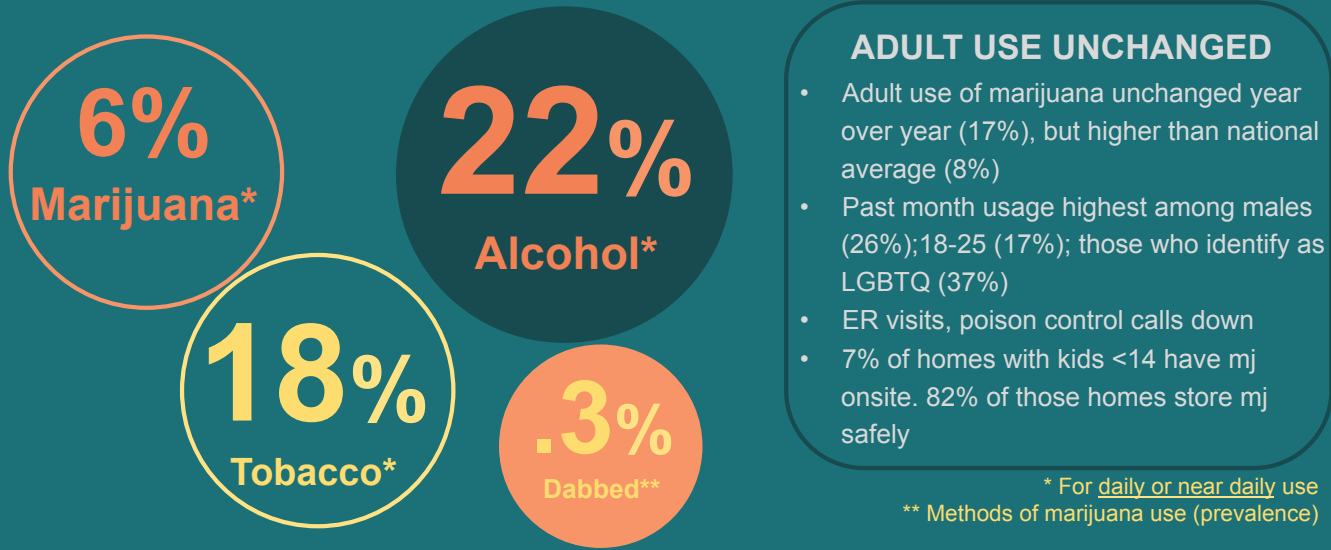
Summary of CDPHE's Jan. 30, 2017 Report:

Monitoring Health Concerns Related to Marijuana in Colorado: 2016

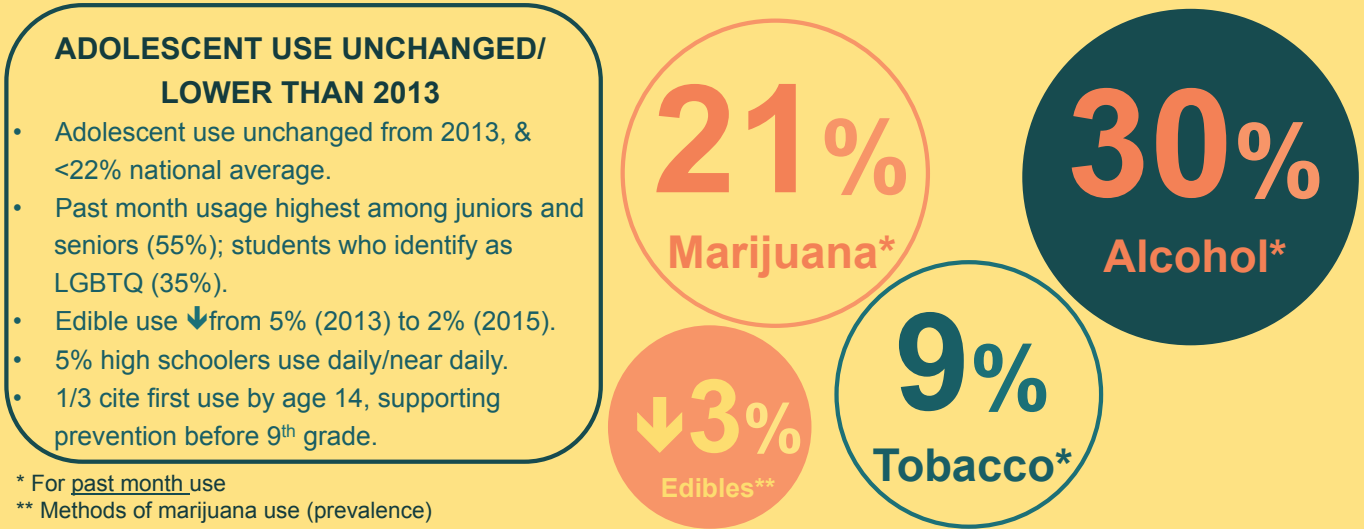
For adults & adolescents, past month use has not changed since legalization in terms of number of people using or frequency of use. Past month use among Colorado adolescents is nearly identical to national average. No new age, gender, race, ethnicity or sexual orientation disparities since legalization.

Full Report: <https://www.colorado.gov/pacific/cdphe/marijuana-health-repo>

////////// Daily Use: Adults Use Marijuana < Other Substances



Monthly Use: Adolescent Marijuana Use < Alcohol //////////



HIGHLIGHTS OF REVIEW OF AVAILABLE RESEARCH

- Better studies are needed to assess causality rather than association, which may be confounded by other factors.
- Infrequent users of mj should wait 6+ hours to drive b/c of higher impairment likelihood. Crash risk ↑ w/ alcohol.
- Some association exists between chronic daily use and cyclic vomiting.
- Chronic bronchitis is associated w/ chronic smoking; vaping ↓ symptoms.
- Child safety packaging ↓ exposure to THC.



marijuanaindustrygroup.org